

# SUITE 2L

2 BED + DEN  
**SUITE: 1650 SQUARE FEET**

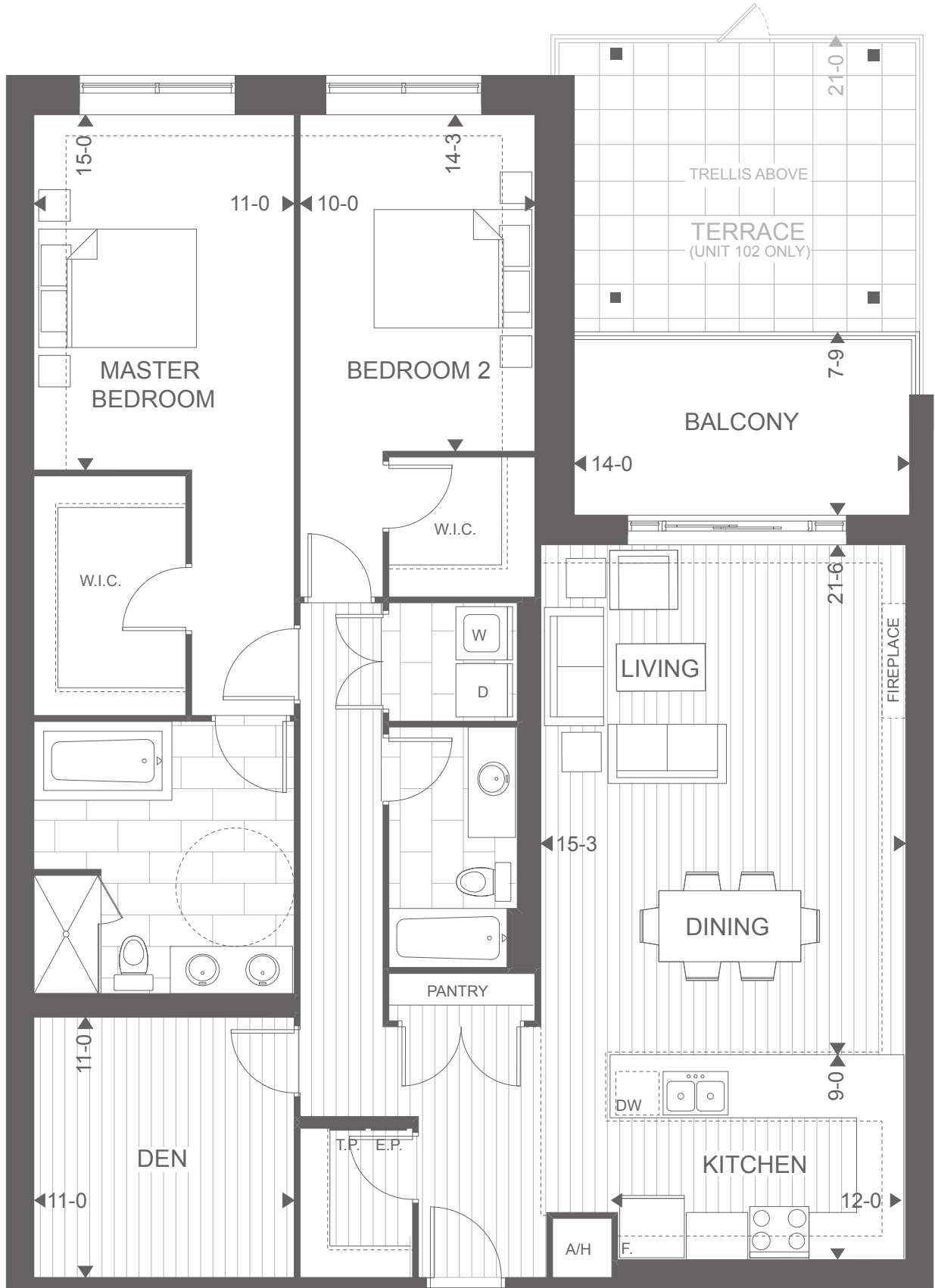
BALCONY: 115 SQUARE FEET  
TOTAL: 1965 SQUARE FEET

(UNIT 102 ONLY, TERRACE: 315 SQUARE FEET)

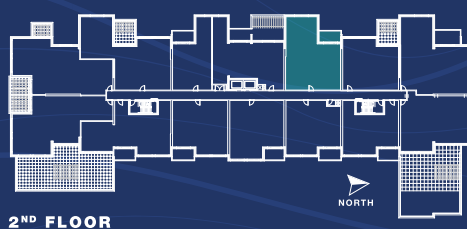
ACCESSIBLE UNIT 



## NORTHLINK



### THE PODIUM COLLECTION



NORTH

# TRICAR

Plans and specifications are subject to change without notice. Actual usable floor space may vary from stated floor area. Illustrations are artists concept only and may show optional features not included in base price. See sales representative for further information. E. & O. E.