

SIGNATURE SUITE

SS-A

3 BED
SUITE: 2110 SQUARE FEET

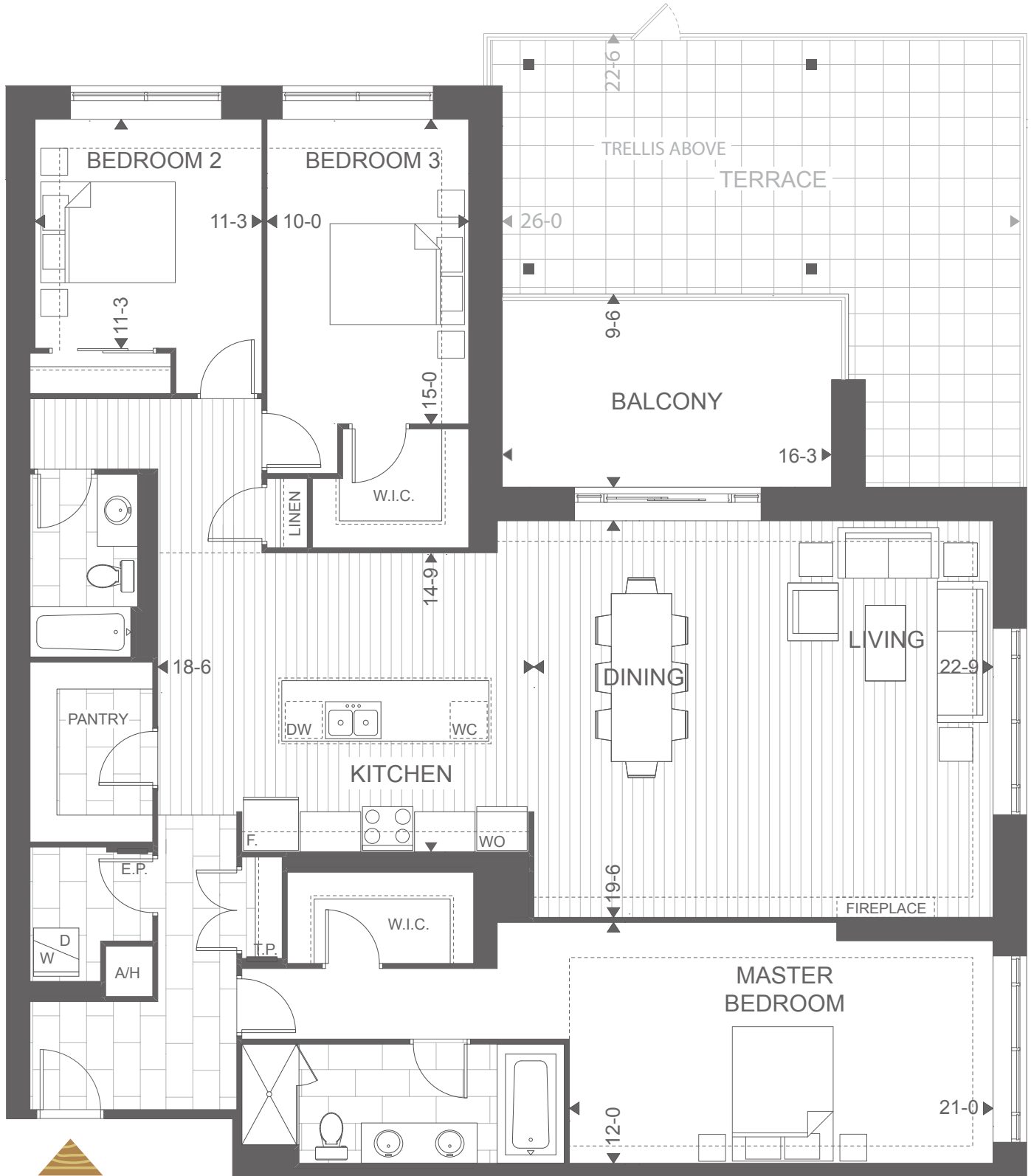
BALCONY: 170 SQUARE FEET

TOTAL: 2280 SQUARE FEET

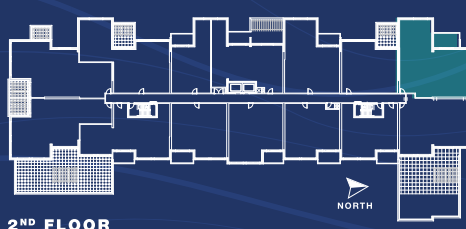
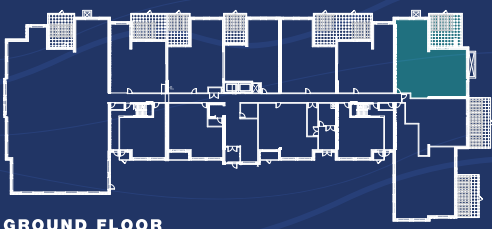


NORHLINK

(UNIT 104 ONLY, TERRACE: 570 SQUARE FEET)



THE PODIUM COLLECTION



TRICAR

Plans and specifications are subject to change without notice. Actual usable floor space may vary from stated floor area. Illustrations are artists concept only and may show optional features not included in base price. See sales representative for further information. E. & O. E.