

# SIGNATURE SUITE

SS-C

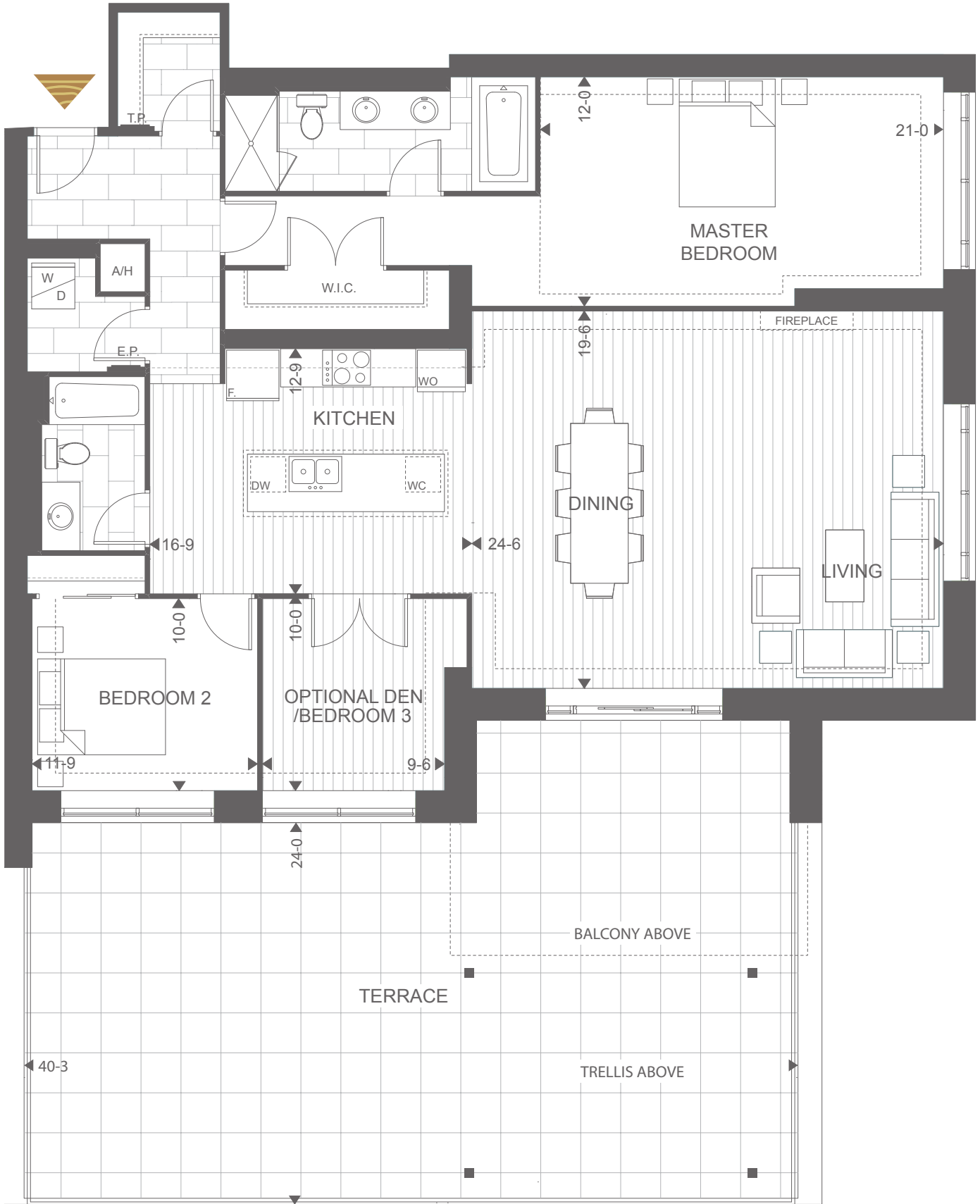
2 BED + DEN  
**SUITE: 1800 SQUARE FEET**

TERRACE: 1765 SQUARE FEET

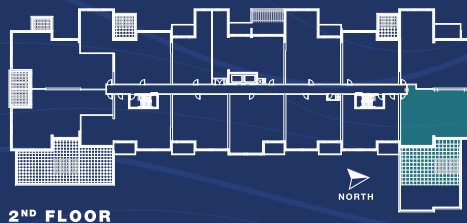
TOTAL: 3565 SQUARE FEET



NORHLINK



## THE PODIUM COLLECTION



NORTH

TRICAR

Plans and specifications are subject to change without notice. Actual usable floor space may vary from stated floor area. Illustrations are artists concept only and may show optional features not included in base price. See sales representative for further information. E. & O. E.